

Engpass

project proposal for Oberteuringen

Tom Carr

Engpass

The art project Engpass has been inspired by the concepts of filter and change in a wide sense. It is a sculpture directly thought for the site. As the water, in whatever state that arrives at the underground site, it is cleansed and comes out changed and purified, people also go through stages of transition.

Its shape evokes an arch or a bridge in almost correct proportions, inviting everyone around to enjoy it in a sort of playful dialogue: it seems fun to ascend the wide steps that quickly shrink, pass through the narrow bridge, to descend, to pass under the arch and also to feel the contrasts in light and color of the railing.

Whether physically going through the sculpture or just observing it, the spectator may think of the concept of filter, moment of transition allegoric to life's experiences.

The structure would be all of blue and white painted metal for the railings and metallic metal platforms and a possible colored cement base at its ends. It would be 400 cm high and the base would be 200 by 700 cm. The structure would be strong enough for people to be on it. The platform of the steps would consist of a metal grid, (which is the same as already used on the site), that would allow for there to be an apparent transparency when seen from above while on it and also from below. This optical characteristic together with change of width of the stair sequence and the color combination could possibly awaken the curiosity of the observer to "use it".

The expression of Engpass is a conjunction of contrasts:

Water goes in at different states and comes out drinkable.

Water always has a tendency to go towards the center of the earth because of gravity; we humans make an effort and go up to quench or curiosity and therefore grow.

Engpass has a sense of humor and at the same time has to do with the serious concept of the moments of transition in our lives.

*Tom Carr
Barcelona, Spain*

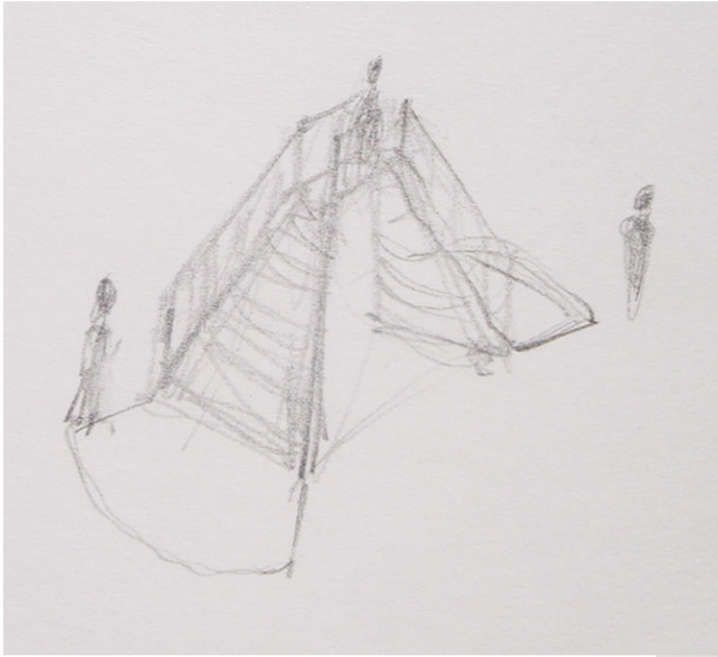
Notes:

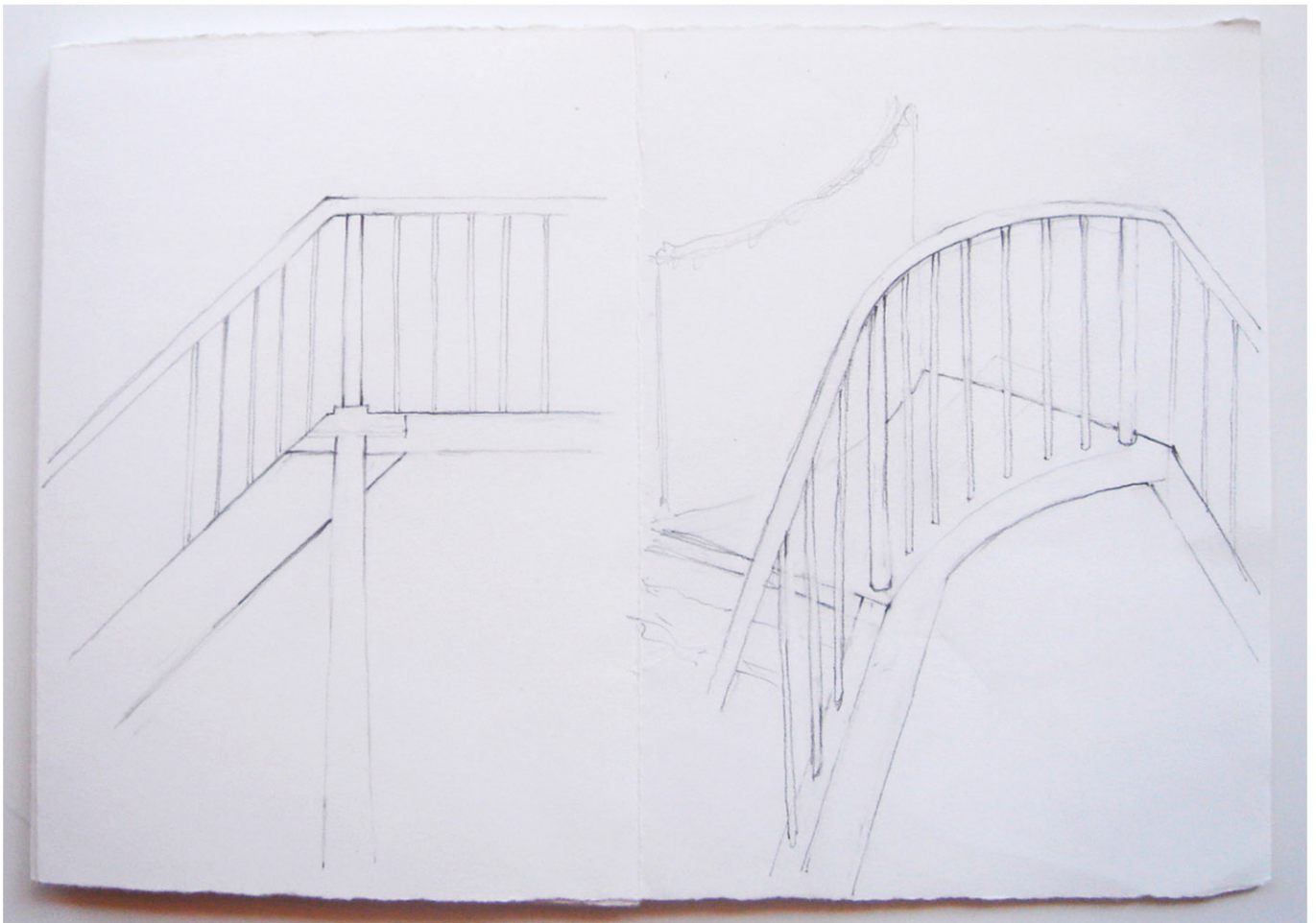
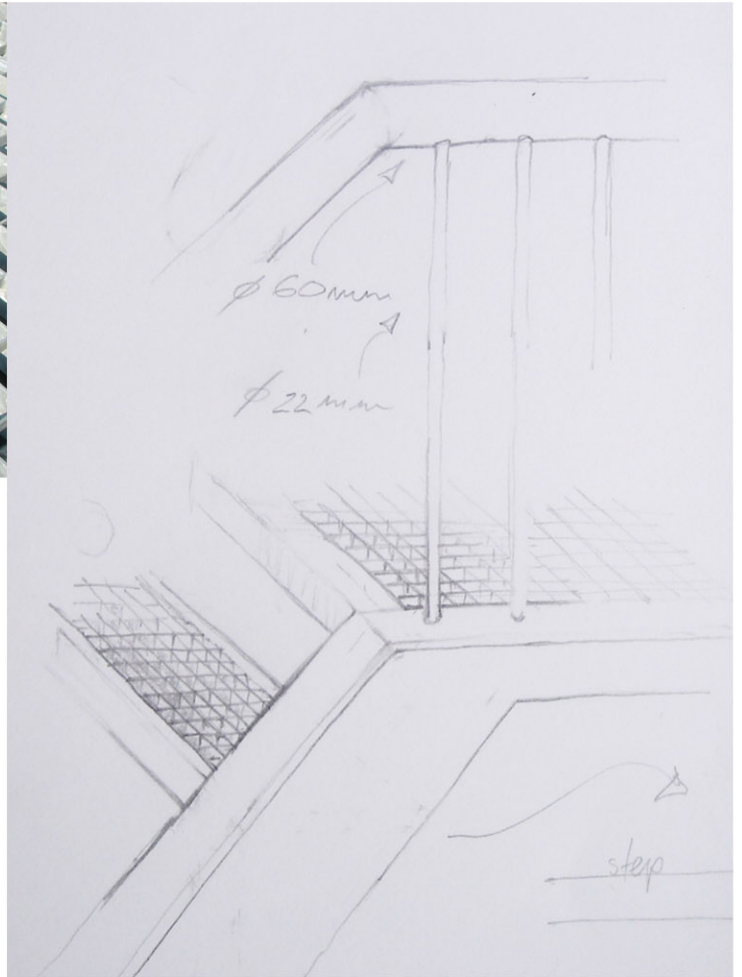
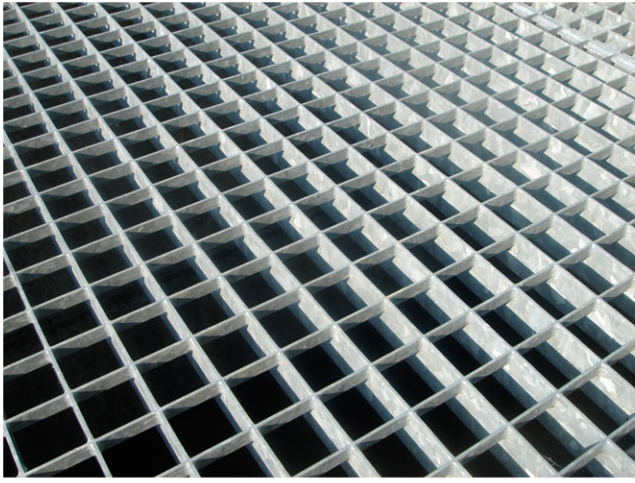
- In the case that the sculpture, Engpass, were chosen for the site, it would be appropriate that it be made by a local blacksmith.

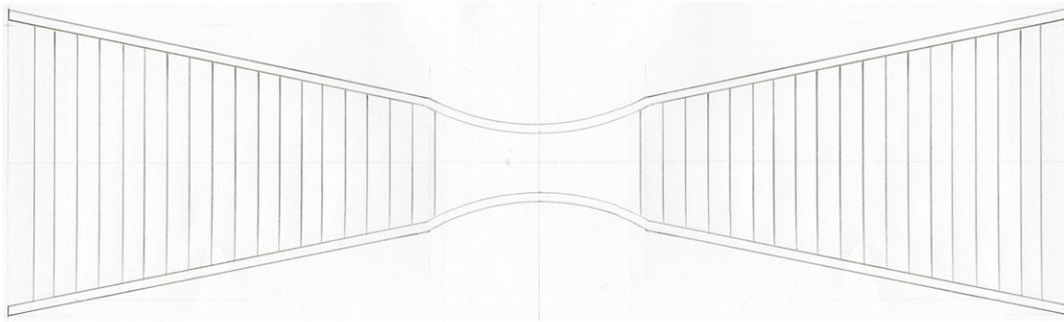
The final design of the construction details would be in collaboration with the blacksmith and the artist Tom Carr.

All of the process of the construction and placement would also be supervised by the artist.

- The definite location would be decided in a next stage. The sculpture should be near the elements but not relate directly to an individual one.








RAL 9016 Traffic White


RAL 5005 Signal Blue

